

**MONTEREY PENINSULA REGIONAL PARK DISTRICT
BOARD OF DIRECTORS MEETING**

DATE: February 1, 2023
TO: Board of Directors
FROM: Caine Camarillo, Supervising Ranger
REVIEWED BY: Rafael Payan, General Manager
SUBJECT: Report on Recent Winter Storms

SUMMARY:

Enclosed for Board review is an update on events and activity before, during and after recent winter storm activity at District parks and properties.

FISCAL IMPACT:

None

FUNDING SOURCE:

Not applicable

FUNDING BALANCE:

Not applicable

DISCUSSION:

A “bomb cyclone” and a series of atmospheric river events pummeled the central coast during the month of January, significantly impacting District properties and infrastructure. Below is a preliminary report with photos of damages sustained as a result of these weather events and a subsequent flood event on January 9, 2023, which closed Garland Ranch Regional Park and Palo Corona Regional Park to public access.

At Garland Park, flood water inundated low-lying areas along the Carmel River, including Lupine Loop, Cottonwood Trail, Sycamore Trail, Cooper Road, Saddle Trail, and multiple segments of the River Trail. In these areas, flood water scoured trail tread and displaced large amounts of soil (see attached photos). As a result, Garland Park was closed to public access until Rangers could complete an assessment of damages and effect repairs. Garland Park reopened to public access on January 20, 2023. However, there are several areas that require additional work, and many fallen trees that were minimally removed in the interest of reopening the park, which will require follow-up.

At Dedampierre Ballfields, the Monterey County Regional Fire District, Monterey Peninsula Water Management District, Cal Fire, Monterey Peninsula Regional Park District, and the Monterey County Water Resources Agency agreed to construct a temporary sandbag retaining wall along the Carmel River, as the Carmel River was forecast to peak above flood stage in the coming days. The wall was completed on

January 4, and unfortunately failed to prevent flood waters from entering DeDampierre Ballfields and the Paso Hondo neighborhood.

At Palo Corona, flood water inundated areas of the Rancho Canada Unit on the north and south sides of the Carmel River, including runoff-based puddling of the Southbank and the Multi-benefit Community trails, and the River Field (located in the PCRFP Front Ranch). At its peak, the river was within a few feet from the former golf cart bridges (see attached photos). Large trees fell across trails, including a large Cottonwood tree that crushed the trailhead kiosk at the junction of the Southbank Trail and the PCRFP Front Ranch.

As of the writing of this report, Rangers continue to assess and discover damage, while also working hard to reopen Palo Corona Regional Park to public access (still closed as of January 20). Coincidentally, MPRPD was on the Gabilan Camp's schedule for the week of 16th, which would have been perfect timing. Unfortunately, a Covid-19 outbreak forced the entire camp to quarantine, which set us back. Because an evacuation order was issued for portions of the Carmel River watershed, including portions of neighborhoods and public lands, all staff (including Rangers) were sent home on January 12 & 13 as a precaution but remained on stand-by, which also set us back. However, Rangers are optimistic that Palo Corona Regional Park can be reopened to public access by Friday, January 27, if not sooner. The District is tracking time, materials, and equipment used in response to this natural disaster in hopes of securing FEMA funds to assist with recovery costs.

GARLAND PARK

Lupine Loop





River Trail, T&S Club, Laureles Trail, Maple Canyon Trail





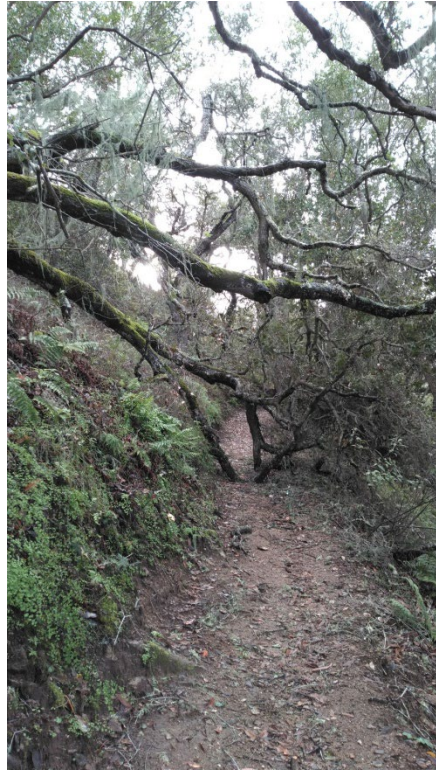
Sycamore Trail, Cottonwood Trail, Snively's Ridge, VC to Footbridge



Hitchcock Trail, Manzanita Trail



Terrace Trail, Cliff Trail



Maple Canyon Trail, Lupine Loop, Randazzo Residence (Eucalyptus tree came from GRRP)



Ranger Staff repairing Cooper Road post-inundation



DeDAMPIERRE BALLFIELDS

MCRFD, MPWMD, Cal Fire, MPRPD, and MCWRA partnered to construct a sandbag retaining wall along the southern levy of the Carmel River to protect the Dampierre Ballfields and the homes along Paso Hondo





THEN THE RAIN CAME...











CLEANUP BEGINS...

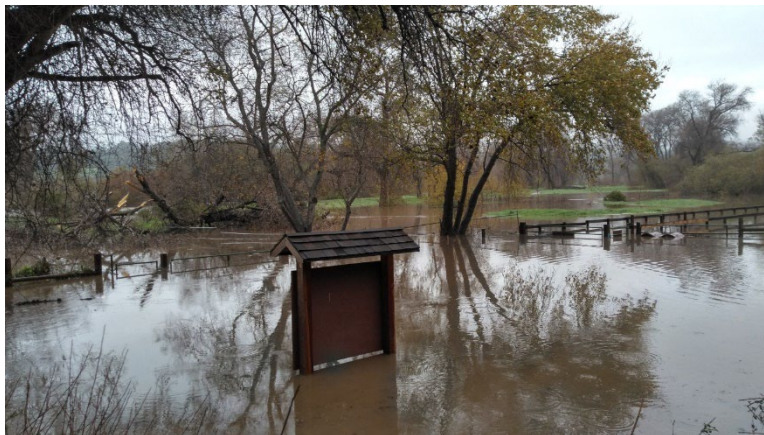


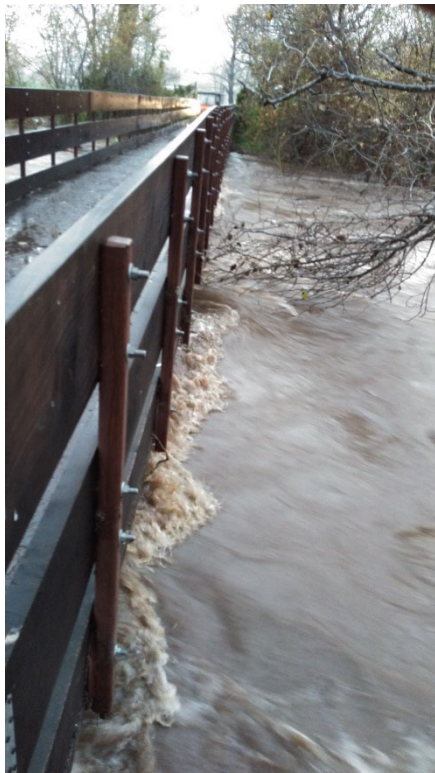
Welcome to MPRPD Jake Smith!



PALO CORONA

Flood waters inundated low-lying areas of the Rancho Canada Unit including the Southbank Trail, nearly overtopping former golf cart bridges







Southbank Trail, PCRP Barn Road, Kiosk crushed by fallen Cottonwood tree



Palo Corona Trail

